



PT. ANUGERAH BASWARA MEGAH

Profile



Trusted Solution Partner



Sertec S.R.L.
Soluciones inteligentes pensando en usted



Land & Marine Lightning Prevention and Protection

www.baswarasolution.com

About Us

PT. ANUGERAH BASWARA MEGAH was established in 2013 in the city of Makassar in the province of South Sulawesi.

We are Solution Partner of Multi National Company such as PT. PLN (PERSERO), PT. PELABUHAN INDONESIA (PERSERO), PT. ANGKASA PURA II, BPFK MAKASSAR, MINISTRY OF HEALTH, HOSPITALS, MAYORA, BANKING.

Our Technology Partners are: HIOKI, SONEL, GFUVE, SATEC, SERTEC, FLISOM and DURASOL.

PT. ANUGERAH BASWARA MEGAH

Akta Perusahaan No : 85
AHU No. 0030453.AH.01.01. Tahun 2016
NPWP : 81.096.496.5-805.000

Notaris Sahabuddin Nur SH.,MKn
NIB No. 0281010142556
PKP : S-49PKP/WPJ.15/KP.0203/2017
0411 - 823 1047

Kantor Pusat

Jl. Pacerakang Raya No 150A, Birinkanaya
Makassar - 90241

Kantor Cabang

Apartemen Pancoran Riverside
jalan Pengadegan Timur I No. 30. RT.6/RW.1
Pengadegan Kec. pancoran kota Jakarta Selatan
12770 tower Chaniago 2/A20
www.baswarasolution.com
sales@baswarasolution.com

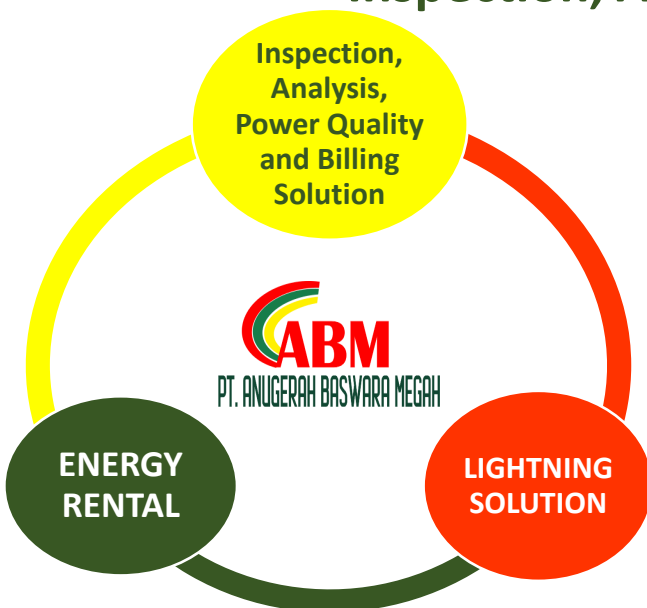
Hunting : 0817 4147 477

VISI

Trusted Solution Partner

MISI

- Educate
- Knowledge & Experience Sharing
- Inspection, Analysis & Solution





CLAMP METER



CLAMP LOGGER



EARTH TESTER



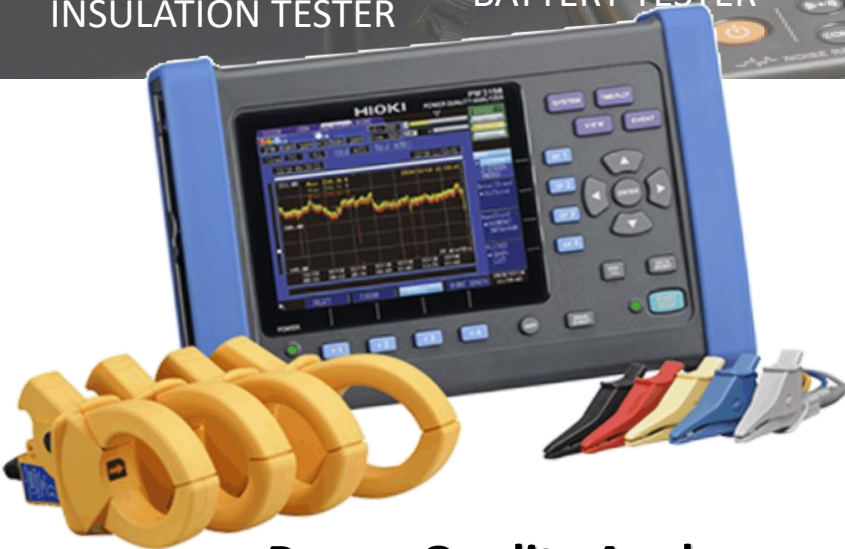
INSULATION TESTER



BATTERY TESTER



Digital Multi Meter



Power Quality Analyzer



Clamp on Earth Tester



Memory HiCorder –
MR6000



Memory HiCorder MR 8847A



3 Phase Meter Calibrator



Single Phase Meter Calibrator



3 Phase Meter Calibrator



Portable Multifunction
Energy Meter Calibrator



INSULATION TESTER



CORONA CAMERA



CABLE LOCATER



POWER QUALITY METER



DIGITAL MULTI & CLAMP METER



THERMAL IMAGER

SATEC

Energy and Power Quality

Measurement & Management



EM132/3



PM130 PLUS



PM135



BFM-II



ezPAC



BFM136



PM180



PM174/5



PRO



EM720



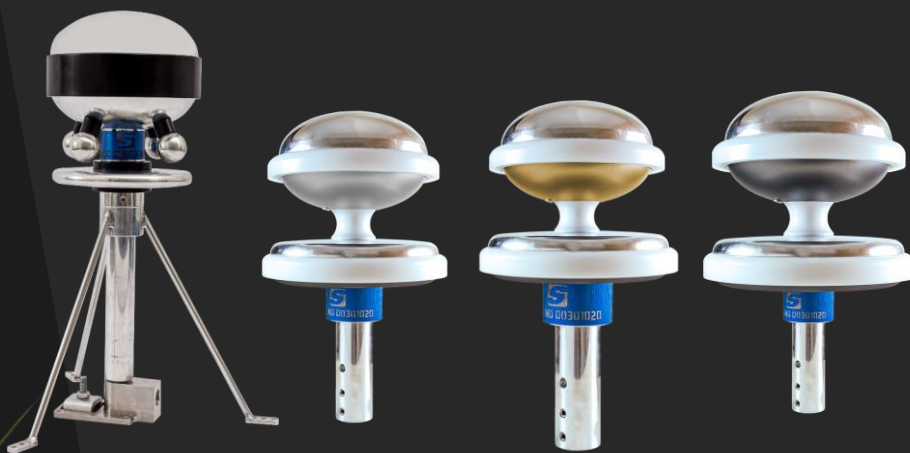
EM920

Sistem Pencegah Petir



Sertec S.R.L.

Soluciones inteligentes pensando en usted





Sertec S.R.L.
Soluciones inteligentes pensando en usted

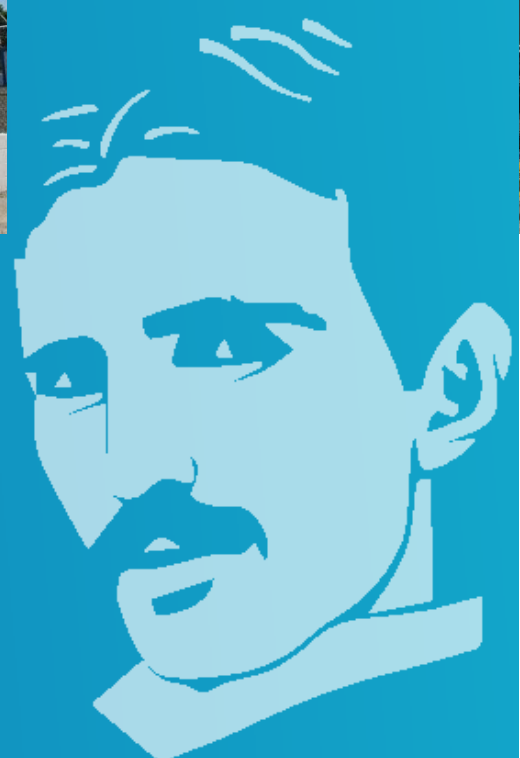
Land & Marine Lightning Prevention and Protection



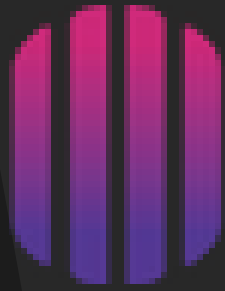
“

In 1916 Nikola Tesla in his patent No. 1,266,175 mentioned the operating principles of a primitive device based on the principles that underpin our developments, explaining the inconveniences caused by the lightning rods, which instead of protecting property and people, attracted the rays increasing the feasibility of electric discharges and consequently the risks that they entailed.

New materials and designs, added to years of experience, have allowed us to improve the experiences of the undisputed scientist Nikola Tesla, evolving in the protection of atmospheric phenomena.

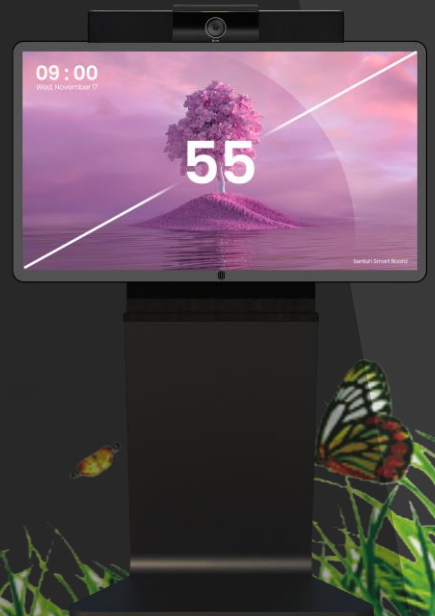


”



SENTUH

Smart & Touch Screen Display





PT. ANUGERAH BASWARA MEGAH
Trusted Solution Partner



sales@baswarasolution.com



www.baswarasolution.com



Whatsapp : +628174147477



Hunting : +628174147477



Pacerakkang Raya no 150A, Birinkanaya
Makassar, Sulawesi Selatan - Indonesia 90241

www.baswarasolution.com